

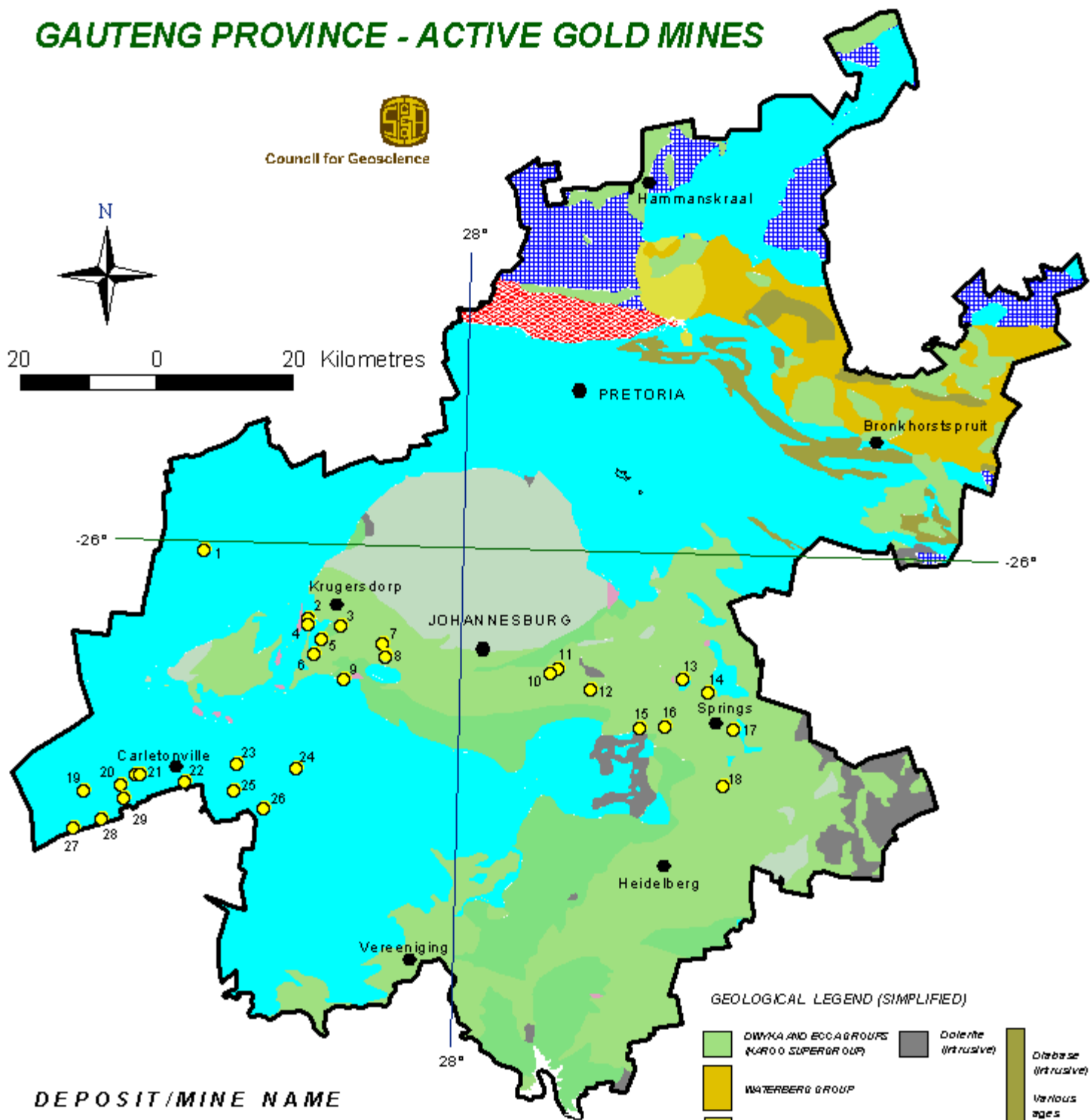
# GAUTENG PROVINCE - ACTIVE GOLD MINES



Council for Geoscience



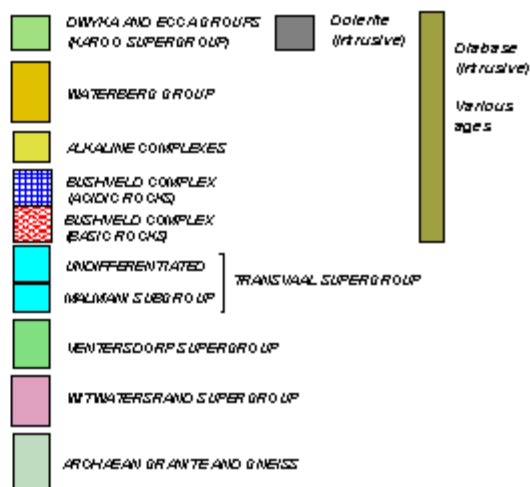
20 0 20 Kilometres



## DEPOSIT/MINE NAME

- |  |                                       |
|--|---------------------------------------|
| 1. Zuikerboschfontein                  | 16. S.A. Land & Expl. (ERGO)          |
| 2. Lindum Reefs Gold Mining Co Ltd     | 17. Daggafontein                      |
| 3. West Rand Consolidated              | 18. Nigel                             |
| 4. West Wits Gold Holdings             | 19. Doornfontein (Blyvooruitzicht)    |
| 5. Randfontein Estates (Cooks Section) | 20. Blyvooruitzicht G.M. Co Ltd       |
| 6. Randfontein Estates                 | 21. Driefontein Consolidated (West)   |
| 7. Durban Roodepoort                   | 22. Driefontein Consolidated (East)   |
| 8. Durban Roodepoort Deep              | 23. Libanon (Kloof Mining Complex)    |
| 9. Randfontein Estates (Doornkop)      | 24. Western Areas (Placer Dome)       |
| 10. Primrose                           | 25. Kloof (Kloof Mining Complex)      |
| 11. Glencairn                          | 26. South Deep (Placer Dome West)     |
| 12. East Rand Proprietary Mine         | 27. Deekraal (Elandsrand G.M. Co Ltd) |
| 13. Consolidated Modderfontein         | 28. Elandsrand G.M. Co Ltd            |
| 14. Grootvlei                          | 29. Mponeng (Western Deep Levels)     |
| 15. East Rand Gold & Uranium           |                                       |

## GEOLOGICAL LEGEND (SIMPLIFIED)



C. J. VO RSTER

